

MiniVAL™ COMPRESSION TESTER

To perform compression and resistance tests to packaging according to International Standard specifications.

Aplicable standards: DIN EN 22872 - TAPPI T804 - ASTM D 642 - JIS - ISTA...



- ❑ 3 Load cells for highly accurate testing
- ❑ Top fixed parallel plate (TAPPI)
- ❑ Strength reading in N, Kg or Lb
- ❑ Automatic platen return after each test for easy loading of next specimen
- ❑ RS-232 interface
- ❑ Compatible with LYNX Plus and Pro where you can integrate all of your test equipment and data management into one system

Eee Top PC included
(Touch Screen 20")

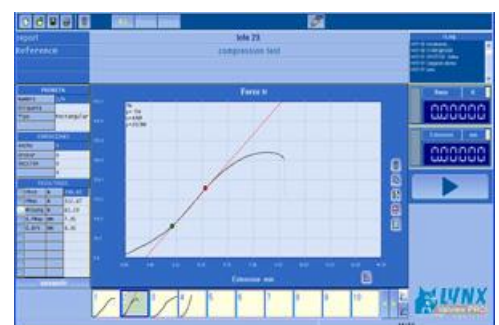


INCLUDED:

LYNX™ Software for Packing & Packaging Compression Test + LYNX Management Module with basic statistics, with control from PC in closed loop using our software test pack with 3 test modules:

- **BCT Test Module** (standard test)
- **Constant Load** (Stacking test)
- **Cyclic Test Module** (Dynamic strain according to Strength and Stroke.)

- Dynamic Testing
- Static Testing
- Custom Fields
- Variable Test Rate
- Company Logos
- Closed Loop Control
- Spanish/English/German/French
- Eee Top PC Touch Screen 20" included



- ❑ **Force range** 10 KN (2,000 lbf)
- ❑ **Load Measuring System** 3 precision matched load cells (prevents side loading errors) .03 % FS accuracy
- ❑ **Drive System** DC variable speed drive system
- ❑ **Deflection Measurement** encoder, 0,25 mm (0.01 in.) accuracy
- ❑ **Displayed System Resolution**
 - Load: 1 N (0.25 lbf.) / Electronic capturing resolution 0.33 N
 - Platen Displacement: 0. 01 mm (0.0004 in.)
 - Platen Speed: 2 mm/min. (0.1 in./min.)
- ❑ **Platen Flatness** Flat within 0.25 mm (0.01 in.)
- ❑ **Parallelism of Platens** Parallel within ± 1 mm (± 0.04 in.)
- ❑ **Safety Features**
 - E-Stop
 - Over-Load Protection in software
 - Upper and lower limit switches
 - Load sensor with automatic retreat
 - Communications failure detection integrated with automatic stop
- ❑ **Variable Platen Test Speed** 1 – 400 mm/min (0.04 – 15,7 in./min.)
- ❑ **Platen Retract Speed** 400 mm/min. (15,7 in./min.)
- ❑ **Guidance of the platen by means of low friction column-guided linear bearings.**
- ❑ **The equipment is mounted with silence dampening and anti-vibration blocks.**
- ❑ **RS-232 Output**

STRENGTH MEASURE

- ❑ Select units : **Newtons, Kg or Pounds**

EXTENSION MEASURE (DEFORMATION)

- ❑ Select units: **millimeters or inches**

BOX COMPRESSION TESTERS - MINIVAL™ series							
MODEL	RANGE KN	RESOLUTION N	PLATENS mm	STROKE mm	DIMENSIONS W x D x H / mm	WEIGHT Kg	POWER w
MINIVAL 10	10	1	500 x 500	500	780 x 780 x 1050	300	800

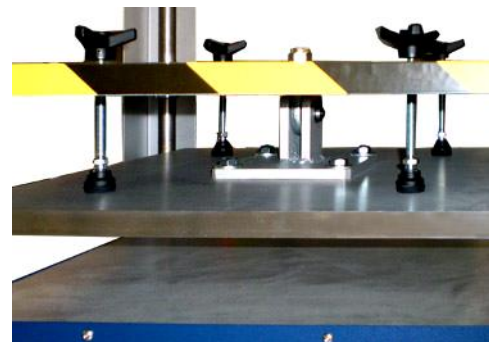
POWER SUPPLY: 220 V single phase 50 / 60 Hz

PACKAGING DIMENSIONS: 1000 x 1000 x 1310 (WxDxH)

GROSS WEIGHT: 420 Kg (DMD packaging)

Code 5909 **OSCILLATING & FIXED PLATE SYSTEM**
For Compression Tests according to TAPPI - ISO & FEFCO standards

Incorporating this option, the maximum distance between plates is reduced from 500 mm to 400 mm



* Windows 7 Professional is a Trade mark of Microsoft Corporation

DELIVERY CONTENT:

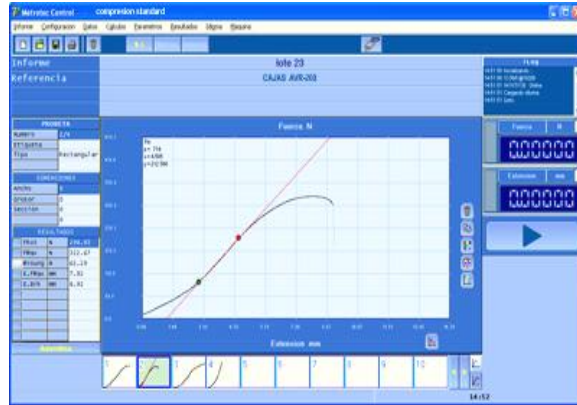
- MiniVAL Compression Tester + Packing & Packaging Compression Test Software **LYNX™** (included 3 test Modules BCT, CONSTANT LOAD, and CYCLIC Tests)
- **LYNX™** MANAGEMENT MODULE with Basic Statistics
- Eee PC Top PC 20" - Windows 7 Professional Operative System





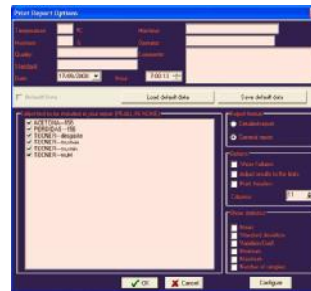
LYNX Test Program for PACKAGING and PACKING COMPRESSION

“Data in Real Time...”



COMPRESSION TESTS modes

- ✓ BCT Module
- ✓ CONSTANT LOAD Module
- ✓ CYCLIC Module



- ❑ Enhances quickness in carrying out tests and in obtaining results.
- ❑ Reduces human error.
- ❑ Traceability according to ISO 9000

When combing this test software with your compression system, it is possible to perform box crush tests, constant load compression, and cyclic compression tests. Machine operation is managed via the software, and all data is captured with the software. The data is displayed in real time on your monitor, and then saved and can be retrieved easily in the future.

- The software records minimum, maximum, and median value as well as standard deviation
- Up to 100 tests of measurement capacity for each report
- SAVE, PRINT and COPY to Office Clipboard functions

INCLUDED: Code T-6879 - LYNX MANAGEMENT MODULE with Basic Statistics

The LYNX Management Module allows you to manage the data generated, choose the interface language, and prepare and print reports (that you can customize with your logo). You can also change the units displayed, as well as change user accounts and passwords. You can also record the minimum, maximum and optimal values to manage data with statistics, charts bars, GAUSSEN Bell, tolerances comparatives and export this data to Word, Excel, PDF and more.

