

VAL™ series COMPRESSION TESTERS

To perform compression and resistance tests to packaging according to International Standard specifications.

Applicable standards: DIN EN 22872 - TAPPI T804 - ASTM D 642 - JIS - ISTA...

- ❑ 3 Load cells for highly accurate testing
- ❑ 2 low friction ball screws for platen movement
- ❑ Oscillating (ISO-FEFCO) & Fixed Platen (TAPPI)
- ❑ Force reading in N, Kg or Lb
- ❑ Deflection reading in mm or in.
- ❑ Automatic platen return after each test for easy loading of next specimen
- ❑ USB interface
- ❑ Closed Loop Control using Lynx software
- ❑ Compatible with **LYNX** Plus and Pro where you can integrate all of your test equipment and data management into one system

PC included

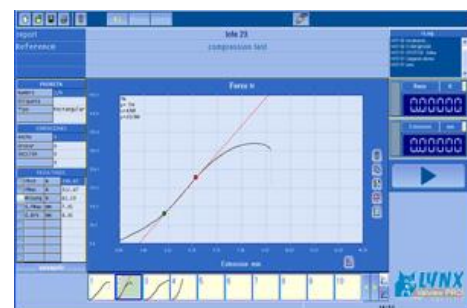


INCLUDED:

LYNX™ Software of Packing & Packaging Compression Test + **LYNX** Management Module with **basic statistics**, with **control** from a PC in **closed loop** through a PC and our software testing pack with 3 test modules:

- **BCT** Test Module
- **Constant Load** Test Module (Stacking test)
- **Cyclic Test Module** (Dynamic strain according to Strength and Stroke)

- Dynamic Testing
- Static Testing
- Custom Fields
- Variable Test Rate
- Company Logos
- Closed Loop Control
- Spanish/English/German/French
- PC included



- ❑ **Force range** Force range according to model (see below), 0 and 300 KN (0 - 30.000 Kg)
- ❑ **Load Measuring System** 3 precision matched load cells (prevents side loading errors) .03 % FS accuracy
- ❑ **Control System** Windows Based XP/2000 (Multi-Language Interface)
- ❑ **Drive System** Precision mechanical ball screws w/ DC Variable Speed Drive System
- ❑ **Deflection Measurement** Encoder, 0.25 mm (0.01 in.) accuracy
- ❑ **Displayed System Resolution**
 - Load: Range according to models
 - Platen Displacement: 0,01 mm (0,0004 in.)
 - Platen Speed: 2 mm/min. (0.1 in./min.)
- ❑ **Platen Flatness** Flat within 0.25 mm (0.01 in.)
- ❑ **Parallelism of Platens** Parallel within ± 1 mm (± 0.04 in.)
- ❑ **Safety Features**
 - E-Stop
 - Over-Load Protection in software
 - Upper and lower limit switches
 - Load sensor with automatic retreat
 - Communications failure detection integrated with automatic stop
- ❑ **Variable Platen Test Speed** 1 – 250 mm/min (0.04 – 10 in. /min.) (*)
- ❑ **Platen Retract Speed** 250 mm/min. (10 in. /min.)
- ❑ **Data Display** Load, Displacement, Speed, Loading Rate and Elapsed Time
- ❑ **Guidance of the platen by means of low friction column-guided linear bearings.**
- ❑ **The equipment is mounted with silence dampening and anti-vibration blocks**
- ❑ **USB Interface**

STRENGTH MEASURE

- ❑ **Select units** : Newton, Kilograms or Pounds

EXTENSION MEASURE (DEFORMATION)

- ❑ **Select units:** millimeters or inches

MODELS	RANGE KN	RESOLUTION N g	PLATES mm	STROKE mm	DIMENSIONS W x D x H / mm	POWER Kw
VAL 30	30	2 / 200	1250 x 1250	1250	1850 x 1250 x 2700	1,5
VAL 50	50	3 / 300	1250 x 1250	1250	1850 x 1250 x 2700	2
VAL 100	100	6 / 600	1550 x 1550	1550	2150 x 1550 x 3000	2,5
VAL 150	150	10 / 1000	1550 x 1550	1850	2150 x 1550 x 3300	3,5
VAL 300	300	20 / 2000	1850 x 1850	2150	2500 x 1850 x 3800	7

POWER SUPPLY : 220 / 110 V Single phase 50 / 60 Hz
 380 / 220 V Three phase 50 / 60 Hz (in models with capacity > 100 KN)

(*) **Optional: Speed range 0 – 400 mm/min.**

DELIVERY CONTENT:

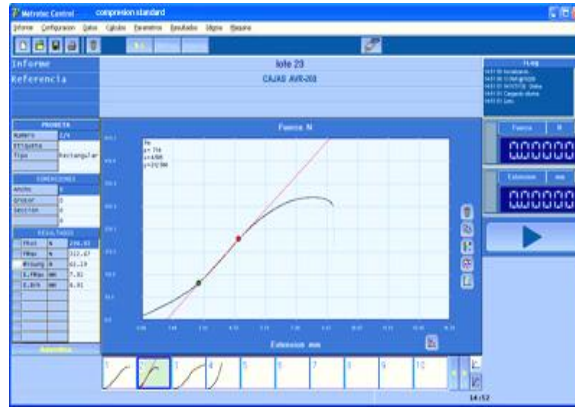
- VAL Compression Tester + Packing & Packaging Compression Test Software **LYNX™** (included 3 test Modules BCT, CONSTANT LOAD and CYCLIC Tests)
- **LYNX** MANAGEMENT MODULE with Basic Statistics
- PC + Monitor - Windows O.S.





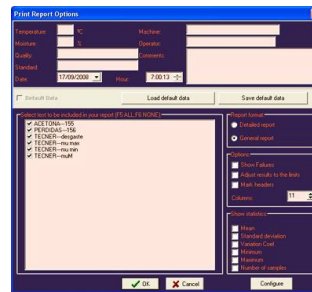
LYNX Test Programme for PACKAGING and PACKING COMPRESSION

“Data in Real Time...”



COMPRESSION TESTS modes

- ✓ BCT Module
- ✓ CONSTANT LOAD Module
- ✓ CYCLIC Module



- ❑ Enhances quickness in carrying out tests and in obtaining results.
- ❑ Reduces human error.
- ❑ Traceability according to ISO 9000

When combing this test software with your compression system, it is possible to perform box crush tests, constant load compression, and cyclic compression tests. Machine operation is managed via the software, and all data is captured with the software. The data is displayed in real time on your monitor, and then saved and can be retrieved easily in the future.

- The software records minimum, maximum, and median value as well as standard deviation
- Up to 100 tests of measurement capacity for each report
- SAVE, PRINT and COPY to Office Clipboard functions

INCLUDED: Code T-6879 - LYNX MANAGEMENT MODULE with Basic Statistics

The LYNX Management Module allows you to manage the data generated, choose the interface language, and prepare and print reports (that you can customize with your logo). You can also change the units displayed, as well as change user accounts and passwords. You can also record the minimum, maximum and optimal values to manage data with statistics, charts bars, GAUSSEN Bell, tolerances comparatives and export this data to Word, Excel, PDF and more.

