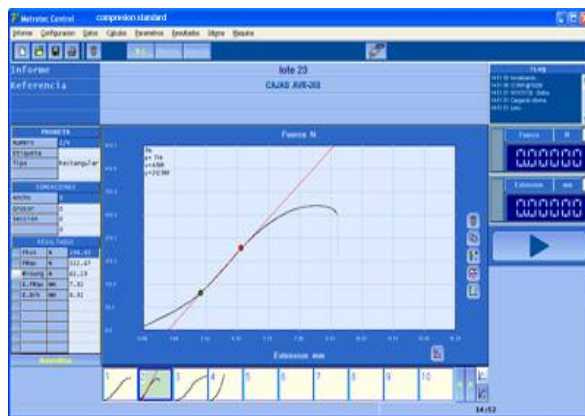


OPENING FORCE TESTER “OPENPACK” OP-50

To determine quickly and accurately the necessary force to unfold and open to the boxes and cardboard cases.

“Data in Real Time...”



As the packaging industry use every time high speed automation productive processes, it is necessary to know the tolerance of the used materials (corrugated and compact/cardboards - fine cardboards).

The equipment **OPENPACK**, allows:

- To know the maximum force necessary to open a folded packing and thus to be able to configure directly the controls in the production machines.
- To determine the quality and the efficiency of board and cardboards used in the process
- To make Control of Quality and Development

- Easy to use
- Robust and highly accurate
- USB interface f/connection to a PC
- Quick return to initial start position
- Improve Your Quality System to ISO 9000
- Eliminates Human Error

With additional grips it is possible to make tests of : Separation glued lines – Bending – Static & Dynamic Friction Coefficients – Tension / Compression ...

(*) It is possible to integrate in: Advanced Management Laboratory Software **LYNX** Plus & Pro (f/multiple test equipment connection)

SPECIFICATIONS

- Portable laptop PC** interface for Data Acquisition and Control
- Universal LYNX Test Programme** – included
- Load Cell of 50 N** capacity of force
- Statistics: Min, Max, Average, Standard Deviation, Gauss Bells, Tolerances and Bars
- Overload protection
- Quick return to initial start position
- Breaking level programmable
- Units Selection: **Kg - N or Lb**
- Programmable test speed from **1 to 1000 mm / min**
- USB interface f/connection to a PC
- Equipped with load cell of **50 N** (standards)
- Reading resolution 1/100.000 full scale: **0,0005N**
- Accuracy: < 0,5 % of the applied strength for a range between 2 and 100 % of full scale
- Maximum crosshead travel: **500 mm**
- Reading resolution: **0,001 mm**
- Programmable extension limits

<p>CONNECTIONS: Electrical: 110V/60 Hz or 230V/50Hz single-phase</p> <p>DIMENSIONS AND WEIGHT: Dimensions: 420 x 670 x 950 mm (W x D x H) Box for transport: 550 x 870 x 1250 mm (W x D x H) Weight Net/Gross: 66 Kg / 115 Kg</p>	<p>DELIVERY CONTENT:</p> <ul style="list-style-type: none"> > Opening Force Tester OpenPACK OP-50 model > Ultralight PC with Windows OS > LYNX Universal Testing software > LYNX MANAGEMENT MODULE w/Basic statistics > Load cell of 50 N <p>The standard supply does not include the grips and other test devices</p>
---	---



* TECHLAB SYSTEMS reserves the right to do any technical modification without advance notice

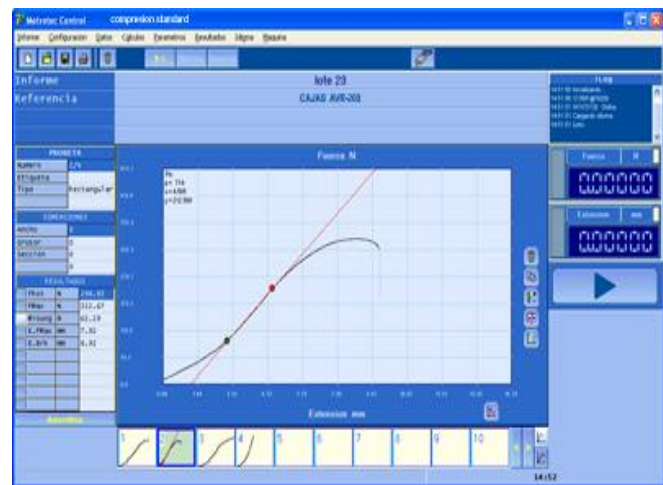
Doc.: OP50 1-CAT-I-R4



Software **LYNX** Universal Tests
TENSILE – COMPRESSION – BENDING – FRICTION and TEAR

"Data in Real Time..."

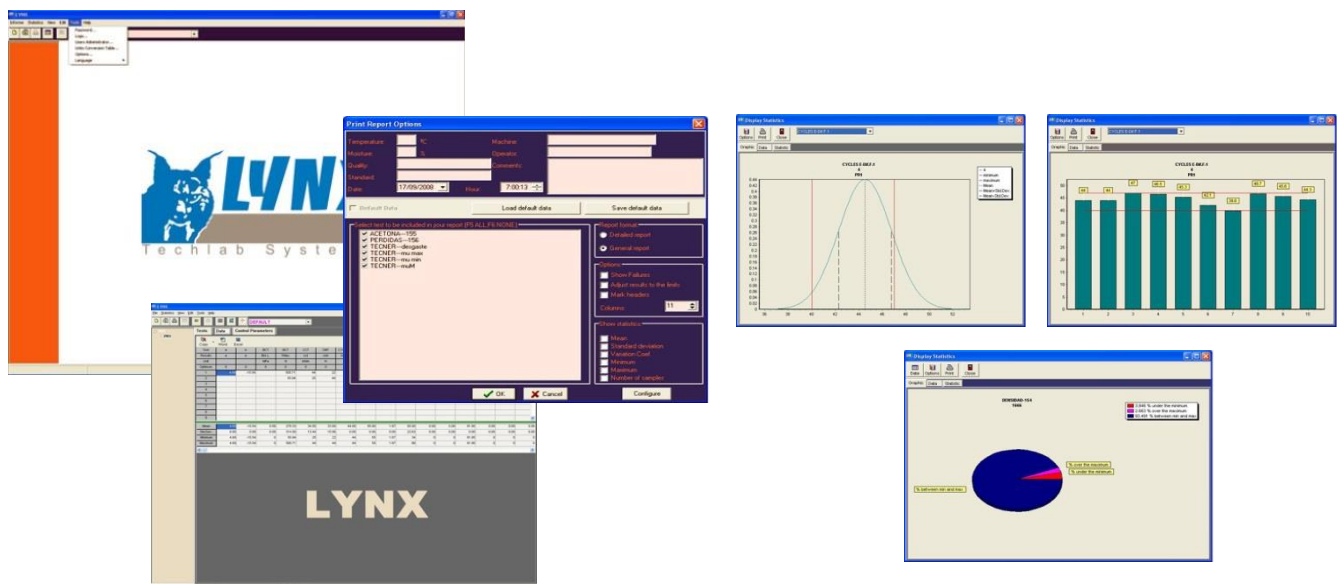
- ❑ Quickness carrying out tests and obtaining results
- ❑ No human mistakes
- ❑ Traceability according to ISO 9000



- ❑ It marks Maximum-Minimum-Medium Values and Standard Deflection
- ❑ Up to 100 tests storing capacity for each report
- ❑ SAVE-PRINT-OFFICE CLIPBOARD FUNCTIONS – Reports in PDF format

INCLUDED: LYNX MANAGEMENT MODULE with Basic Statistics

The LYNX Management Module allows you to manage the data generated, choose the interface language, prepare and print reports that you can customize with your logo, change the testing units, different user password levels, introduce the minimum, maximum and optimal values to manage data with statistics, charts bars, GAUSSEN Bell, tolerances comparatives, export data to Word - Excel ..., PDF generation and more.



* TECHLAB SYSTEMS reserves the right to do any technical modification without advance notice

Doc.: LYNX_UNIVERSAL_TESTS-1-CAT-I-R1