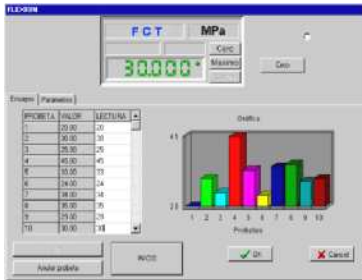
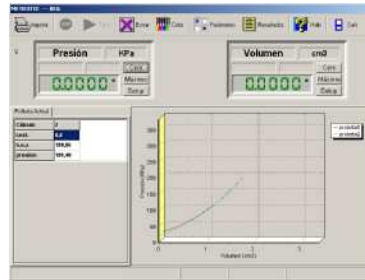




"Data in Real Time..."



11 channel Interface



2 channel Interface

- SCALES
- BOND TESTER
- COLORIMETERS
- COMPRESSION TESTERS
- TEAR TESTERS
- BURST TESTER
- UNIVERSAL TESTING MACHINES
- Bendtsen/Bekk/Gurley SMOOTHNESS
- MICROMETERS
- OPACIMETER
- PUNCTURE TESTERS
- POROSITY TESTERS
- STIFFNESS TESTERS
- VISCOSIMETERS...

It can work autonomously or Integrated in **LYNX Management Module** (one-to-one connection) or in the **LYNX Integral Management System Plus or Pro** (Multiple test equipment connection in LAN) with other parameters generated in the Testing Laboratory

- Quickness in carrying out tests and in obtaining results.
- No human mistakes.
- Traceability according to ISO 9000

Through this Test Module, that can work individually, data from the Test/Masurement Laboratory are Digitally and Graphically displayed in a PC

- It marks Maximum – Minimum – Medium Value and Standard Deflection
- Up to 100 Tests or Measurement Capacity for each report
- SAVE – PRINT and COPY to OFFICE CLIPBOARD FUNCTIONS

OPTIONAL : Code T-6879 - LYNX MANAGEMENT MODULE with Basic Statistics

The LYNX Management Module allows you to manage the data generated, choose the interface language, prepare and print reports that you can customize with your logo, change the testing units, differently user password levels, introduce the minimum, maximum and optimal values to manage data with statistics, charts bars, GAUSSEN Bell, tolerances comparatives, export data to Word - Excel ..., PDF generation and more.

